



mCaMS Online Trading Application User Manual



Table of Content

1.0) Getting started

- 1.1) Downloading the app
- 1.2) Registration and obtaining user credentials

2.0) Login page

3.0) Dashboard

- 3.1) Familiarizing with user interface.
- 3.2) Buying / Selling Shares
- 3.3) Listed Companies
- 3.4) Market

Chapter 1.0 Getting started

1.1) Downloading an app.

- ❖ To download the app, please go to Google Playstore if you are using android powered phone and if you are using iPhone, please go to Apple app-store.
- ❖ On the search type "capital market solution" or "mCaMS".
- ❖ Download and install the app on your device.
- ❖ Open the app and you are ready to go!

The app will appear like this

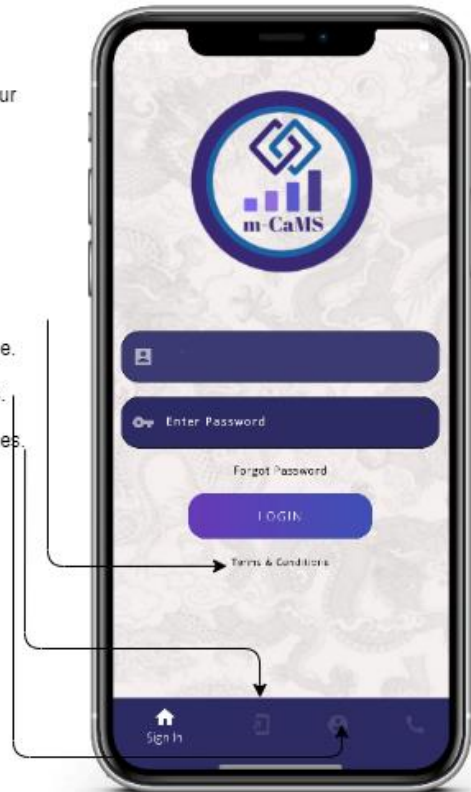


1.2) Registration and obtaining user credentials

- ❖ To be able to use you need user credentials.
- ❖ First, create a Depository Account (CD) with any of the brokerage firms.
- ❖ Once your CD account is created apply for Online-Trading Account from our website www.rsebl.org.bt or through the mCaMS app
- ❖ Upon successful validation, you will be provided with the credentials in your registered email address.

2.0) Chapter 2 Login Page

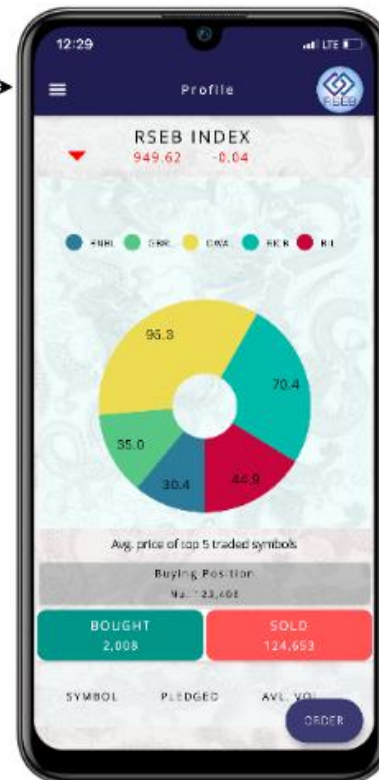
- ❖ To log in, please enter the username and password provided to you. Click forgot password if you do not remember your password. If there is 5 failed login attempts, your account will be locked.
- ❖ Click on login.
- ❖ If the username or the password is mistaken, you will be prompted a dialogue box that says, "Invalid Credentials, please try again".
- ❖ If you click on "Terms & Conditions", you will get guidelines on how to operate the app from a regulatory and legal perspective.
- ❖ If you click here, it will guide you through the registration process.
- ❖ If you click here, you will get live market prices of Listed Companies.

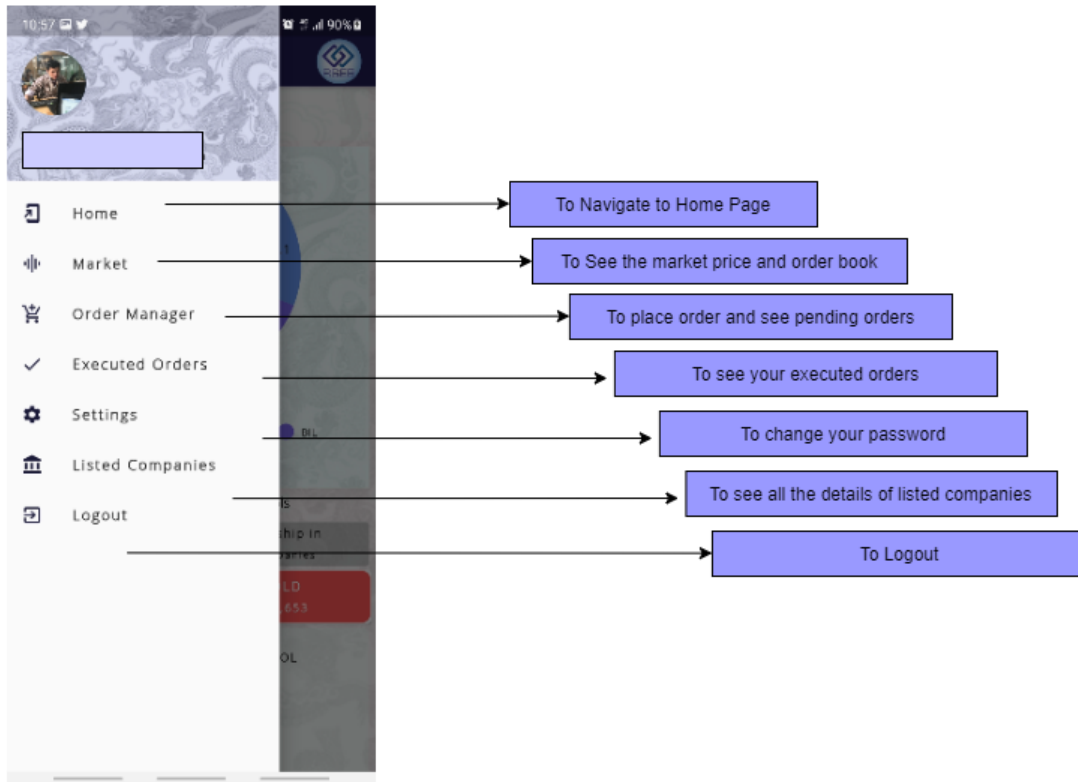


Chapter 3.0 Dashboard

3.1) Familiarizing with interface

- ❖ You can use the hamburger button on the top left corner to navigate.
 - ❖ RSEB INDEX indicates the current index.
 - ❖ The Piechart shows average prices of top 5 traded symbols in past 12 months.
 - ❖ Buying Position - Available cash with the broker
BOUGHT - Total Worth of shares bought from your broker
SOLD - Total Worth of shares sold from your broker
 - ❖ This section shows your ownership and share holding.
SYMBOL - Company
PLEDGED - Pledged Shares, this will not be allowed to sell
AVL. VOL - Volume that can be sold in the market
- * Volume that is offered for sale in the market and Volume that needs to be settled will not be shown here.





3.2) Buying/Selling shares

❖ On the dashboard, click on Order Manager from the menu or Order on the bottom of the screen.

❖ Select the SYMBOL of the company whose share you want to buy/sell.
 > You will get the list of names of companies

❖ Select the side (BUY or SELL)

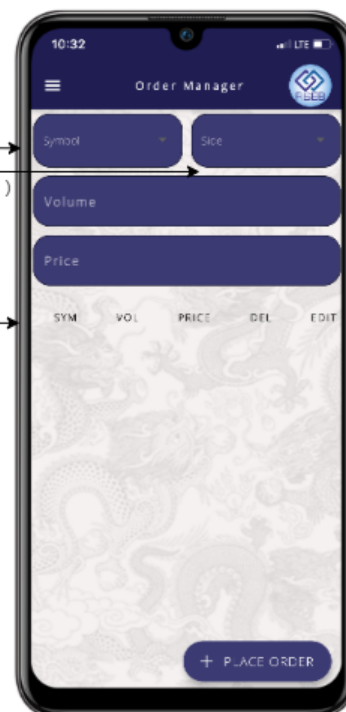
❖ Enter the volume (number of shares) you want to buy or sell

❖ Enter your desired price, there is a circuit breaker associated with the price which is subject to change.

❖ Your order will be rejected if,
 1. if you have an insufficient amount to buy (contact your broker if you want exposure)
 2. insufficient shares to sell
 3. price is out of range
 4. market is closed.

❖ Your pending orders will be displayed here

1. You can delete your order by pressing the Delete icon
2. You can edit by pressing Edit icon



3.3) Listed Companies

❖ Click on Listed Companies to view all the listed companies that are currently active

1. Click on your company of interest to see details



3.4) Market

❖ Click on Market to see current market price, change in the price and order book which shows supply and demand of the particular company.

1. Click on your company of interest to see details

